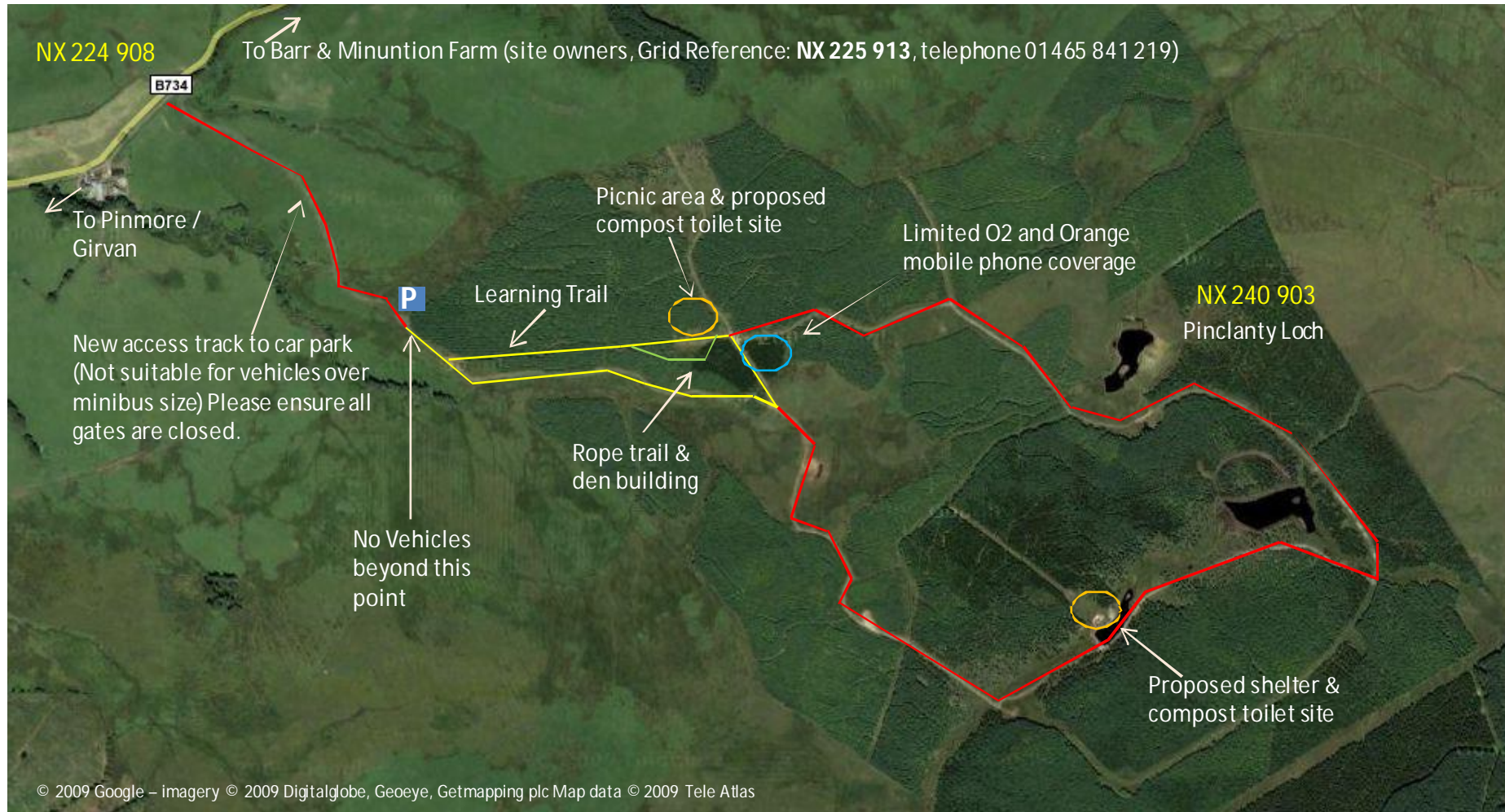
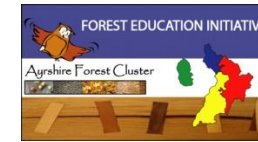


# Pinclanty Forest Learning Trail

## Site & Access Map.



Site entrance: Situated South of the B734 Pinmore to Barr road in South Ayrshire, Entrance grid reference: NX 224 908

East Ayrshire Woodlands contacts: 01290 426973 (office) 07734 972 673 (mobile)

Girvan Police: 01465 713587

Vodafone network has good coverage at Pinclanty Forest and is definitely recommended.